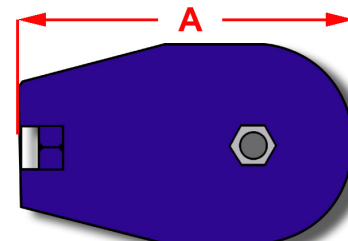
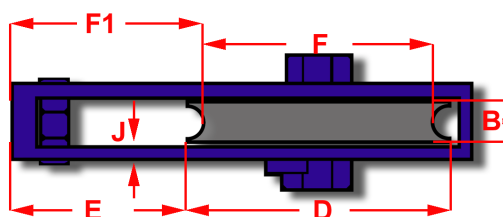
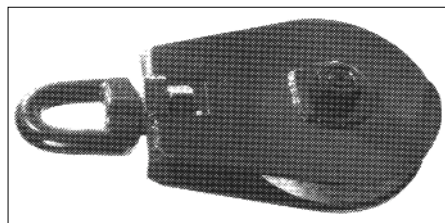
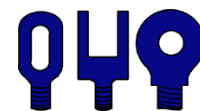


BMM – TAKLEBLOKKE, BLÅMALEDE MED RULLELEJE
BMM – TACKLE BLOCKS, BLUE PAINTED WITH ROLLER BEARING



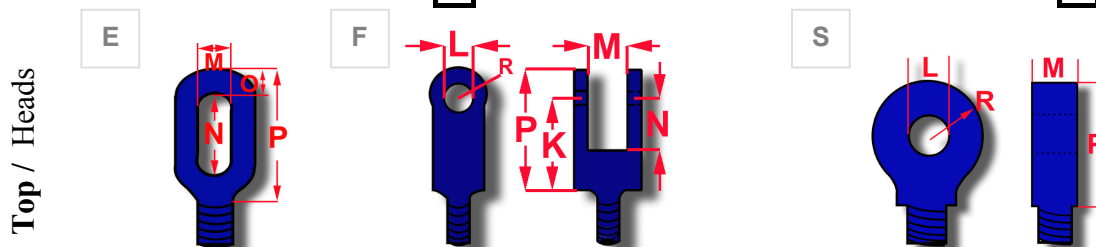
Best. nr.	A	B	D	E	F	F ₁	G	J	SWL	Brudstyrke	Vægt/stk.
Order no.	A	B	D	E	F	F ₁	G	J	SWL	Breaking load	Weight/Pcs
	mm	mm	mm	mm	mm	mm	mm	mm	Ton 1:5	Ton	Kg.
KT 400 -2☒	645	70	400	215	150	240	345	12	15,0	75,0	108,0
KT 500 -2☒	780	76	515	250	160	285	445	15	20,0	100,0	154,0
KT400D -2☒	645	70	400	215	150	240	345	12	15,0	75,0	166,0
KT500D -2☒	780	76	515	250	160	285	445	15	20,0	100,0	251,0

Blokkene skal bestilles med: / Blocks must be ordered with:

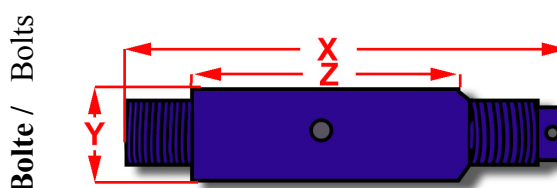
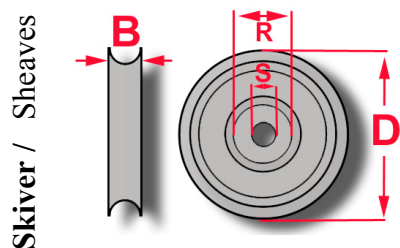
E Swivel øje / Swivel eye **F** Swivel gaffel / Swivel fork **S** Swivel sjækkeløje / Swivel shackle eye

Ekstra tillæg / Extra add on services

H Hærdet skive / Flame hardened sheave **C** Testede med certifikat / Tested with certificate **G** Galv. / Galv.



Order no.	M	N	O	P	K	L	M	N	R	P	L	M	R	P
	mm	mm	mm	mm	mm	mm	mm	mm	mm	mm	mm	mm	mm	mm
KT 400-2☒	58	110	50	225	195	51	85	115	65	260	51	73	60	150
KT 500-2☒	75	140	55	280	195	51	85	115	65	260	51	73	60	150



Article	B	D	R	S	Weight	Article	X	Y	Z	Weight
	mm	mm	mm	Mm	Kg.		mm	mm	mm	Kg.
SKT 400-2	70	400	128	60	35,0	PKT 400 -2	217	60	97	8,0
SKTV 500-2	76	515	140	65	42,5	PKT 500 - 2	242	65	112	9,5
						PKT 400D -2	305	60	183	10,0
						PKT 500D -2	340	65	210	12,0

Bemærk! SKTV 500-2 er valset skive og kan ikke hærdes / Please note SKTV 500-2 are a rolled sheave and can not be supplied as hardened.