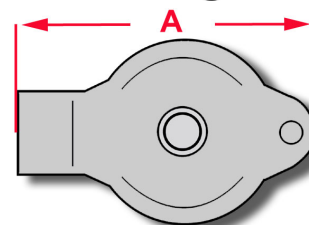
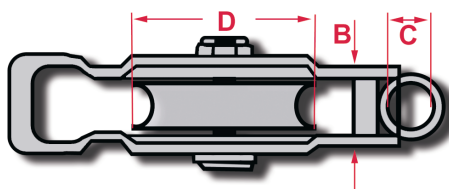


BMM – TRIO BLOKKE, GALVANISEREREDE, ENKELTE

BMM – TRIO BLOCKS, GALVANISED, SINGLE



Best. nr.	A	B	C	D	Max Wire	SWL	Brudstyrke	Vægt/stk.
Order no.	A	B	C	D	Max Wire	SWL	Breaking load	Weight/Pcs
	mm	mm	mm	mm	mm	Ton 1:5	Ton	Kg.
KT 1 - ☒G	163	22	16	80	16	1,0	5,0	1,7
KT 2 - ☒G	195	24	22	110	18	2,0	10,0	3,1
KT 3 - ☒G	257	28	31	150	20	3,0	15,0	6,4
KT 4 - ☒G	330	35	40	185	22	4,4	22,0	11,1
KT 6 - ☒G	365	42	40	210	24	6,0	30,0	17,0

Blokkene skal bestilles med: / Blocks must be ordered with:

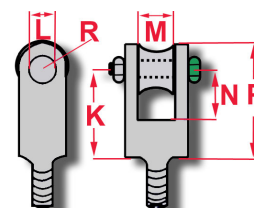
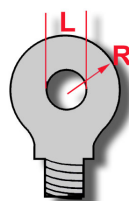
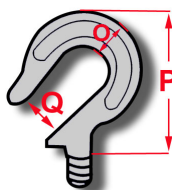
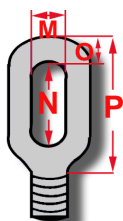
- | | |
|--|--|
| 1 Kuglelejer/ball bearings (KT6 – 4) Smørbare/greaseable | K Swivel krog / Swivel hook |
| O Bronzelejer/ bronze bushings (KT1 – 6)Smørbare/greaseable | F (KT4 – 6) Swivel gaffel / Swivel fork |
| E Swivel øje / Swivel eye | S (KT4-6) Swivel sjækkeløje /Swivel shackle eye |

Ekstra tillæg / Extra add on services

B Hundsvot / becket

C Testede med certifikat / Tested included certificate

Top / Head

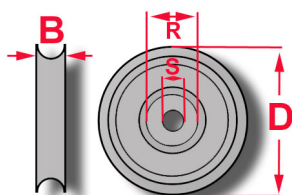


Order no.	M	N	O	P	O	P	Q	L	M	R	P	K	L	M	N	R	P
	mm	mm	mm	mm	mm	mm	mm	mm	mm	mm	mm	mm	mm	mm	mm	mm	mm
KT 1 - ☒☒	25	34	13	65	20	82	25										
KT 2 - ☒☒	23	57	16	94	25	94	28										
KT 3 - ☒☒	26	66	20	110	30	105	30										
KT 4 - ☒☒	33	82	24	134	38	132	38	26	35	35	93	104	23	40	65	30	134
KT 6 - ☒☒	40	95	28	153	46	170	46	29	42	40	100	104	23	40	65	30	134

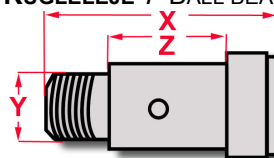
SKIVER / SHEAVES

S 1
Ball bearing

S 2
Bronze



KUGLELEJE / BALL BEARING



BRONZELEJE / BRONZE BEARING



Order no.	D	B	R	S1	S2	Weight	Order no.	X	Y	Z	Weight	Order no.	X	Y	Z	Weight
	mm	mm	mm	mm	mm			mm	mm	mm			mm	mm	mm	mm
SKT1- ☒	80	22	47	17	20	0,75 kg.	PKT1 - 1	50	17	28	0,10 kg	PKT1-0	57	20	28	0,15 kg.
SKT2- ☒	110	24	52	20	25	1,30 kg.	PKT2 - 1	52	20	30	0,15 kg	PKT2-0	61	25	30	0,25 kg.
SKT3- ☒	150	28	47	20	25	2,65 kg.	PKT3 - 1	67	20	41	0,20 kg	PKT3-0	68	25	35	0,30 kg
SKT4- ☒	185	35	62	30	30	5,20 kg.	PKT4 - 1	75	30	43	0,40 kg	PKT4-0	75	30	43	0,40 kg.
SKT6- ☒	210	42	76	30	30	7,60 kg.	PKT5 - 1	85	30	51	0,40 kg	PKT6-0	85	30	51	0,45 kg.